



Pandemic Production Plan

Phase 1

Post-production services provided including animation and videos using graphics, text, previously captured pictures and video and/or stock footage.

In person services will only be provided for critical infrastructure purposes, and only if deemed safe by all parties involved.

Phase 2

Post-production services provided including animation and videos using graphics, text, previously captured pictures and video and/or stock footage.

Safety related communications requiring in person video capture are available and will be provided if it's deemed safe to do so. The in person video capture will be provided, outside only, without getting closer than 6 feet from any subject. Staff will wear masks and any other needed PPE at all times. Audio will be captured strictly from external camera and/or boom mics. Chairs, other furniture, props and video and microphone equipment used during production are cleaned before and after each use.

Services will be available for "live on tape" and/or live streaming services for events with a single Good Fruit staff member on site.

Phase 3

Post-production services provided including animation and videos using graphics, text, previously captured pictures and video and/or stock footage.

In person video capture provided outside only. Staff will all wear masks and any other needed PPE at all times. Interviewees are required to wear masks, unless medically unable to do so, when a 6 foot distance can't be maintained. Situations for mask wearing include, mic'ing subjects, adjusting lighting and other production tools before the shoot and during tear down after the interview and shoot when the subject is within 6 feet of Good Fruit staff. Chairs or other furniture and props used during production are cleaned before and after each use.

Services will be available for "live on tape" and/or live streaming services for events with multiple Good Fruit staff members on site.

Phase 4 & 5

Post-production services provided including animation and videos using graphics, text, previously captured pictures and video and/or stock footage.

In person video capture provided both inside and outside. Staff all wear masks and any other needed PPE at all times. Interviewees asked to wear masks, unless medically unable to do so, when a 6 foot distance can't be maintained. Situations for mask wearing include, mic'ing subjects, adjusting lighting and other production tools before the shoot and during tear down. Chairs or other furniture and props used during production are cleaned before and after each use.

Services will be available for "live on tape" and/or live streaming services for events with multiple Good Fruit staff members on site.

Phase 6

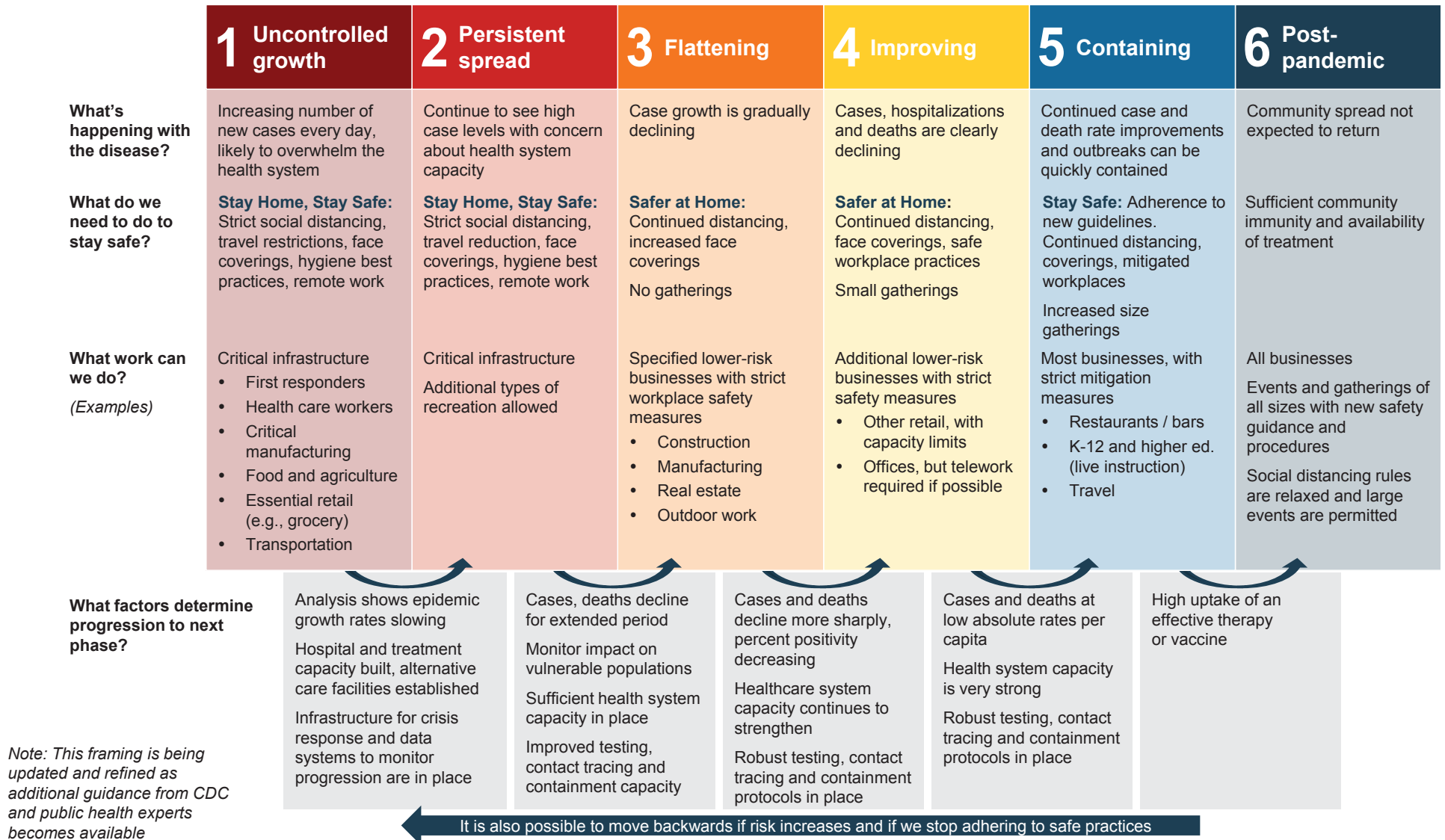
Post-production services provided including animation and videos using graphics, text, previously captured pictures and video and/or stock footage.

In person video capture provided both inside and outside. Staff not required to wear masks or any other needed PPE. Chairs or other furniture and props used during production are still cleaned before and after each use.

Services provided to allow single and multi-camera "live on tape" and/or streaming services for events.

Phases of production will be adjusted if needed to meet the phases of safety precautions for any and all catastrophic events.

MI SAFE START PLAN



Note: This framing is being updated and refined as additional guidance from CDC and public health experts becomes available